

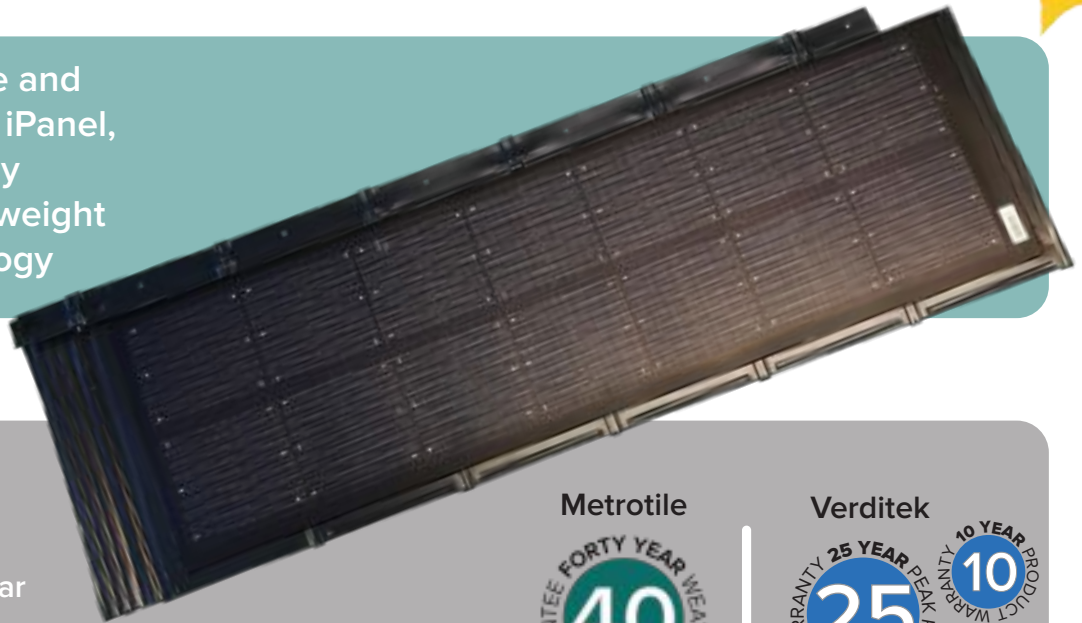
THE ROOF TILE HAS **EVOLVED**

## THE METROTILE INTEGRATED **PHOTOVOLTAIC** SYSTEM

FROM



The incredibly secure and lightweight Metrotile iPanel, now complimented by Verditek's sleek low-weight photovoltaic technology



- Fully integrated PV
- No more bulky retro-fit systems
- State of the art 24 busbar filament technology
- PV panel 6 times less weight than traditional PV panels of the same size

Metrotile



Verditek



Metrotile



**Lightweight**

Light and easy to handle and install.



**Durable**

Colour stability and protects against UV light.



**Stable**

Resistance to extreme wind or earthquakes.



**Strong**

Exceptional strength and resistant to damage.



**Fire proof**

To be conform with the European standards

Verditek



**24 busbar**

State of the art 24 busbar filament technology – improves cell performance, adds structural support and protection against cracking



**Warranty**

No less than 85% minimum peak power at STC after 10 years. We also offer up to 20 years of linear performance warranty depending upon the application



**High Efficiency**

Use of monocrystalline top of the range solar cells guarantees similar energy output as conventional PV panels of the same size



**Ultra Lightweight**

Reduced weight to 2.5 kg/m<sup>2</sup> – about 6 times less than traditional PV panels of same size



Metrotile uses Verditek 2x7 photovoltaic panels

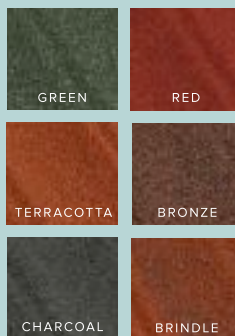


Maximum power <sup>1</sup>	79 W
Columns x Rows (cells no.)	4x4 (16)
Size (mm) LxWxH <sup>2</sup>	601x546x3
Weight (kg)	1.2
Max power Voltage Vmp	9.1 V
Max power Current Imp	9.0 A
Open circuit voltage Voc	10.9 V
Short circuit current Isc	9.6 A
Operating temperature	-40/+85 °C
Temp. coeff. Pmax	-0.38 %/°C
Temp. coeff. Voc	-0.27 %/°C
Temp. coeff. Isc	0.05 %/°C
Maximum reverse current	12 A
Safety class	A
Max. System voltage	1000 V
NOCT Operat Temp.	42°C
Connection socket	Multicontact
Connection cable	Solar cable 4 mm, double insulated, UV resistant, MC3 or MC4 connector system
Solar cells	Multicristaline Si cells (size 156x156 mm) with nano-wires technology
Bending radius	15% circa
Warranty period	10-year Product and Performance Warranty (power output no less than 85% of the minimum Peak Power at STC)

# metrotile Profiles Standard Range

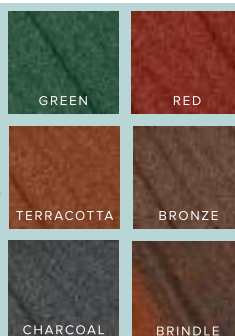
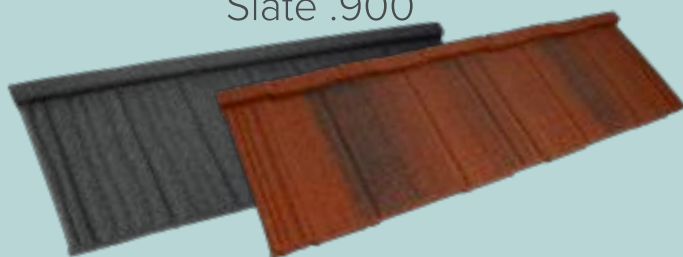


## Metrotile Bond .410/.900



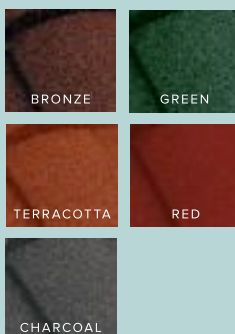
<b>Pitch</b>	10° to 90°
<b>Dimensions</b>	1330mm x 370mm
<b>Weight</b>	Per tile: 2.8Kg / 4.6kg Per m <sup>2</sup> : 6.2kg / 9.9kg
<b>Coverage</b>	0.46m <sup>2</sup> - 2.15 per m <sup>2</sup>

## Metrotile Woodshake .410 Slate .900



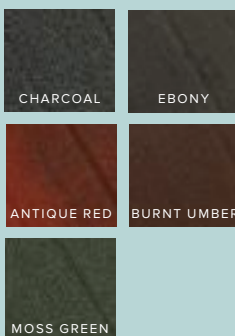
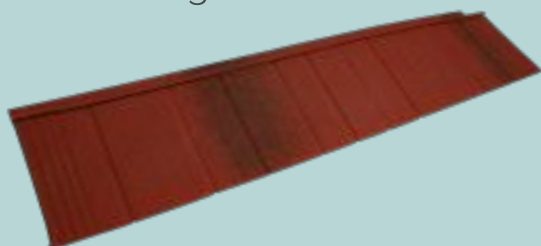
<b>Pitch</b>	12° to 90°
<b>Dimensions</b>	1330mm x 370mm
<b>Weight</b>	Per tile: 2.8Kg / 4.6kg Per m <sup>2</sup> : 6.2kg / 9.9kg
<b>Coverage</b>	0.46m <sup>2</sup> - 2.15 per m <sup>2</sup>

## Metrotile Roman .410



<b>Pitch</b>	10° to 90°
<b>Dimensions</b>	1280mm x 370mm
<b>Weight</b>	Per tile: 2.7Kg Per m <sup>2</sup> : 6.3kg
<b>Coverage</b>	0.44m <sup>2</sup> - 2.21 per m <sup>2</sup>

## Metrotile Shingle .410



<b>Pitch</b>	15° to 90°
<b>Dimensions</b>	1335 x 300 mm
<b>Weight</b>	Per tile: 1.9Kg Per m <sup>2</sup> : 6.1kg
<b>Coverage</b>	0.313 m <sup>2</sup> - 3.2 Tiles per m <sup>2</sup>

This is our standard selection of tile profiles. **Our tile range is constantly expanding** - contact us to discuss new profiles designs including Gallo, Mistral and iPanel.



**ISO9001**  
**ISO14001**

Full range of accessories  
available source your  
entire roof directly from  
Metrotile

