

Top roof,  
safe home.



## Decra today

More than 65 years ago a roofing revolution has started. A uniquely ambitious roofing tile of steel was developed with attractive volcanic stone coating.

It was light, strong yet beautiful. Decra was born. It has redefined roofing and kickstarted a new industry in its segment.

Today Decra® is part of the **IKO Metals** Group within IKO Industries, which is the world's largest family-owned company manufacturing and exporting roofing products from Canada.

The **IKO Metals** Group is probably the world's number one specialist for metal roofs and facades, owning metal roof tile brands besides Decra® such as GERARD, Metrotile and Tilcor. IKO Metals operates the world's largest pressed metal roof tile factory in Belgium and leads the industry in stonechip and powdercoated pressed metal roof tiles.

By choosing Decra, you choose the leading brand in its segment, which guarantees you quality and durability.

**After 65 years our vision is still to provide light, durable, beautiful, and one more thing that is becoming increasingly relevant, and sustainable roofing products for homeowners around the world. Do you share our vision?**





# Our history

In 1957 Decra developed the first of these innovative roofing tiles in New Zealand. We are still the largest manufacturer of coated pressed metal roof tiles in the world. We continue to lead the industry in our segment. Would you like to know more about our rich history? Please read below the major milestones from the 1940-s to today.



Decra is proud of its heritage as a supplier of premium roofing products for more than 65 years. We are the innovator in the area of stonechip and powder coated, pressed metal roof tiles.



## 1940 The birth of a roofing revolution

The new 'Decra roof concept' was discovered when bituminous emulsion was sprayed on existing iron clad buildings as a camouflage and protective coating in the UK as part of the preparation for World War II.



## 1957 The first Decra prototype

In New Zealand, Lou Fisher produced the first 4-pan 'Decramastic' metal tile with bitumen coating. Stone chips were applied to the coating to prevent the sheets sticking together which turned out to be an attractive, aesthetic feature demanded by customers.



## 1964 The 10-pan Harveytile is produced

It was a unique concept and quickly gained widespread acceptance



## 1967 The first Decra profile – the breakthrough to the absolute weather security

The Decramastic profile undergoes a dramatic change, as a result of the development of a seven-pan tile that interlocks, giving complete tile-to-tile contact the entire length of the tile. The strong interlocking system is built by fastening the tiles not onto each other only but onto the roofbattens as well. This way both the Decra roof tile and the complete roof structure become much stronger against the forces of nature and completely watertight.



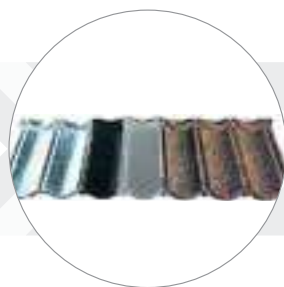
## 1970 USA wants Decra

The first Decra license was granted to a U.S. company based in Florida.



## 1977 Decra conquers Europe

Polytuil in Belgium commenced manufacture under licensed joint venture with the first purpose built plant to produce Decra® tiles in Europe, then under one trademark Decramastic.



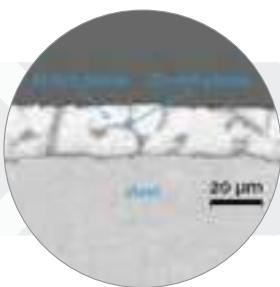
## 1980 Decra provides even stronger protection against weather

Bituminous emulsion was replaced by an acrylic barrier coating system with improved weathering properties under Decrabond trademark.



## 1981 2<sup>nd</sup> Decra factory in Europe!

Decra A/S in Denmark commenced manufacture as the second European licensee. In other continents, IKO Metals's predecessor continued manufacturing and distribution of the Decra brand.



## 1994 Unparalleled Corrosion resistance

The aluminium/zinc alloy replaced galvanised steel and proved to be a superior raw material for Decra offering 4 to 8 times longer corrosion resistance. It is the key to Decra's legendary durability.



## 1998 Manufacturing plant in Tongeren, Belgium

Production started in Europe to supply the revolutionary stone coated pressed metal tiles for the old continent.

ROOFTG



## 2019 The largest pressed metal tile factory in the world

After acquiring Gerard and Twintile brands, our current parent company, the Canadian IKO, who owns Decra and Metrotile as well, became the world's leading manufacturer of pressed metal roof tiles under the name RoofTG. (Roof Tile Group). The strongest brands of pressed metal tile industry have united under one roof. By merging the operation lines in Belgium, RoofTG built the largest factory of pressed metal tiles in the world..

IKO Metals  
ROOFING SYSTEMS



## 2023 ROOFTG changed its name and became IKO Metals

The parent company of Decra, RoofTG, became IKO Metals! One of the world's largest family-owned manufacturers in the roofing industry, the Canadian IKO, has been a trusted partner in our metal tile business for over a decade. Now we are proud to wear the name of our great partner, IKO.



# Why Decra?

There are at least 4 must-have benefits we all want from a roof protecting our homes. Thankfully, with Decra you don't have to make a compromise and can have it all.



**Beautiful  
durable roof**



**Strong protection**



**Investment for  
a lifetime**



**Recyclable,  
sustainable roof**

**The durability of our roofs is guaranteed by the strength of steel. That strong material is the loyal defender of every building we cover. Let the years bring large hail stones, a steel roof tile won't break or crack letting leakages penetrate into your home.**





Visit [www.decra.roofs.eu/en/references](http://www.decra.roofs.eu/en/references)  
to see for yourself how other DECRA roofs  
look!

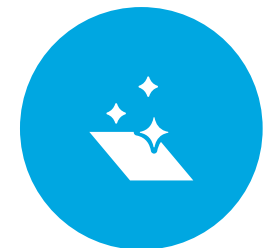
# BEAUTIFUL DURABLE ROOF

High winds and storms might come in more extreme ways with climate change but they are not able to damage your roof. Why? Because of our unique, horizontal 8-point-fastening technique, which makes Decra roof hurricane-proof.

External forces are well kept in bay as well as internal enemies: rust. A special metal alloy, zinc-aluminium, looks after the corrosion resistance of Decra tiles ([www.decra.roofs.eu/en/technology](http://www.decra.roofs.eu/en/technology)). Without that we could not offer you our 40 year warranty.

Steel is elegantly hidden under the natural stone chip coating, which is available in a wide range of colours to match your house. Stone coating makes our roofs look unlike any other steel roofs: sophisticated, homey, and simply beautiful. We are proud that our stone coated metal tiles with their captivating appearance compete with clay and concrete tiles rather than other painted metal brands.

In case you do like the look of painted metal roofs, you will find your favourite colour as well in the Decra painted profile range. You might be surprised how elegant and sleek our powder coated tiles look.



**Beautiful  
durable roof**

# STRONGEST PROTECTION FOR YOUR HOME

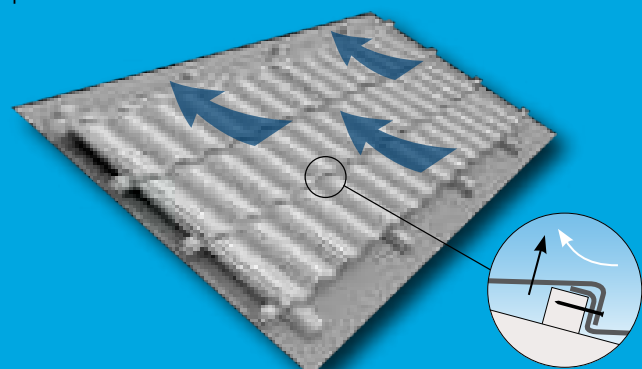


**Strong protection**

Reading this title, your first thought could be similar to a Facebook comment, which said: *"Light metal roof is a joke, it will be blown away with the first wind."*

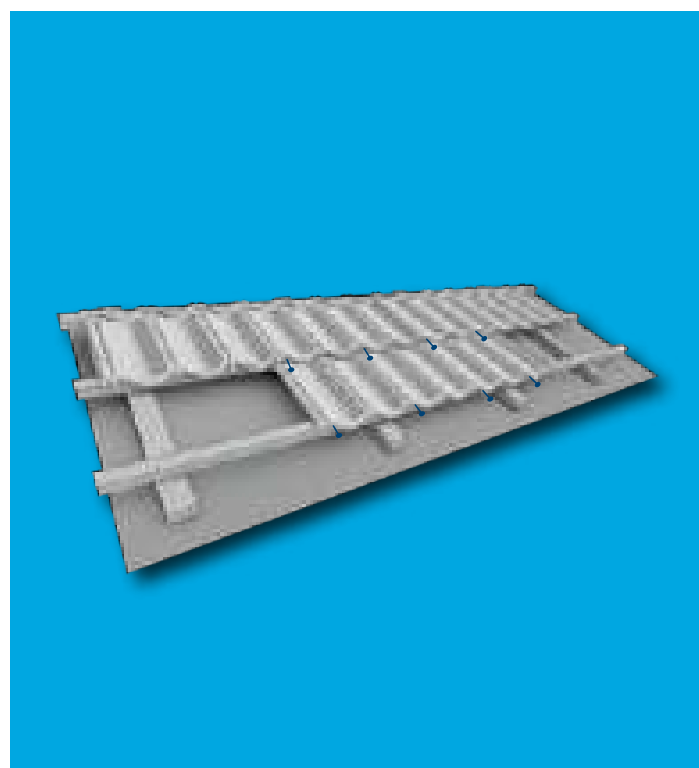
Nothing could be further from the truth. The commenter obviously did not know our hurricane-proof installation technique and did not take the effort to study it. By doing that he/she missed the probably strongest roof protection available today in the market. While our metal roof tiles are light indeed requiring lighter roofs saving you money, they withstand storms and winds even better than traditional heavy tiles. How can that be true?

DECRA ROOF –  
NO WIND UPLIFT

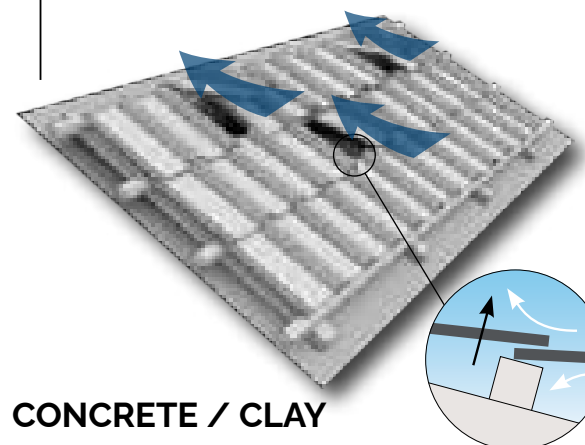


**DECRA**

Horizontal fixing with 8 nails per tile.  
**Extreme** wind resistance.



CONCRETE/CLAY TILE ROOF –  
WIND UPLIFT



**CONCRETE / CLAY**

Only the weight of the tiles  
holds them on the roof.

**Unable** to withstand extreme winds.

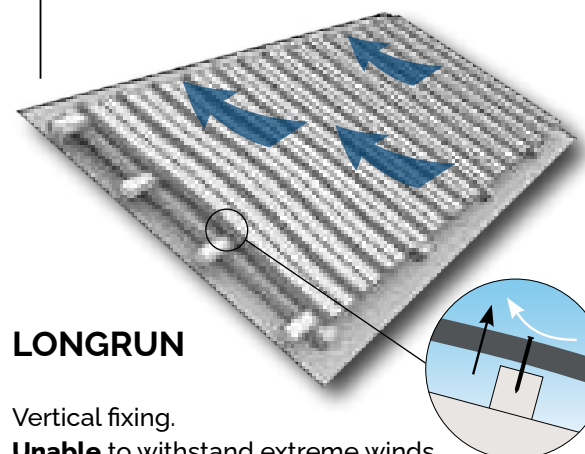
## Vertical fastening

When roofs are damaged by storms or high winds it is a combination of the imbalance of high pressure created by the wind moving over the roof cavity. This creates uplift that can be compared to the same principle which creates high and low pressure on an aircraft wing giving the plane lift. Tornadoes and cyclones have demonstrated the significant benefits offered by Decra roofs' horizontal fastening and interlocking steel membrane system. High winds blowing over a roof cause a difference in air pressure between the inside and outside of the roof. The stronger the wind, the higher the pressure differential and this results in "wind uplift" perpendicular to the roof. This "wind uplift" is the primary cause of failure in roofs with vertical fastening, where the fastener simply pulls out. With the horizontal fastening method used for Decra roofs, the fasteners must shear off for the roof to fail, an unlikely event given there are eight or more fasteners holding down each tile.

## 8-point-fastening

We leave nothing to blind chance. We fix those tiles hard to the battens with nails and fasteners. **Each Decra tile is fastened at 8 different points.** Storms and high winds may tear off other roof tiles but not Decra. 40 year weather-proof warranty is our word.

LONGRUN/CORRUGATED/RIB ROOF –  
WIND UPLIFT



**LONGRUN**

Vertical fixing.

**Unable** to withstand extreme winds.





## PROBABLY THE BEST ECONOMICAL ROOFING INVESTMENT



**Investment for  
a lifetime**

Many homeowners switch to Decra after they saw their cheap roof gets broken after 10 or 15 years. Their house is leaking and they need a complete new roof thus they pay for their roof twice. It should not be like that. **One should buy a roof only once in a lifetime.**

**Decra roof tiles** are well protected against the forces of nature thanks to their corrosion-resistant, strong metal core and their unique horizontal, 8-point fastening technique. Stone-coated steel roofing from Decra® offers unmatched strength and durability, resulting in a practically maintenance-free lifetime roof solution for homeowners for decades to come. The 40 year warranty backs up our words.

## A GREEN ROOFING SOLUTION FOR OUR TIME



**Recyclable,  
sustainable roof**

Decra is for people thinking long-term. Not only in their private life but on a broader scale as well. Roofing solutions, which lasts only for a few decades or even less, do not only tempt for wrong financial decisions but have a bad impact on the environment as well.

We pride ourselves in the fact that a Decra roof has an extended **lifecycle 2-3 times longer** than conventional roofing materials generating less waste and costs. Our main raw material, steel, is **100 % recyclable**. A conventional clay or concrete roof can be even 7 times heavier than a Decra roof requiring much more timber for constructing the roof structure for heavy roof tiles. In addition to that for each Decra product 25-30 % recycled material is being used in the manufacturing process.

Step by step we can move together to a **more sustainable roofing solution** replacing those conventional alternatives that have massive environmental foot print due to the materials used, the short product life-cycle and the waste they leave behind. Under your Decra roof you can sleep assured that you chose the right product not only for your home but for our planet as well.



# Material structure

## Decra Classic & Stratos L



Transparent protection layer

Stone Chip

Basecoat

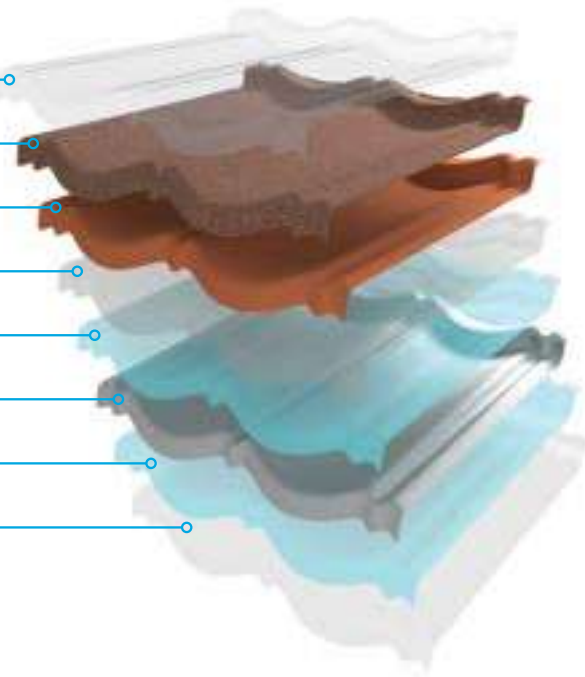
Transparent Acrylic Coating

Aluminium-Zinc alloy

Steel

Aluminium-Zinc alloy

Transparent Acrylic Coating



### Coating specification

**Transparent protection layer:** Clear 100% acrylic resin coating for granule binding and a semi-gloss finish. It helps enhance the appearance as well as increase the resistance to physical damage.

**Stone Chip:** Carefully selected granules provide excellent surface coverage and attractive natural looking and lasting colours.

**Basecoat:** A tough opaque coating based on acrylic resin. It bonds the stone chips and protects the underlying layer from water and UV radiation. It has good UV resistance and retains its flexibility although it does become harder after the first few weeks.

**Transparent coatings:** Both sides of the Aluminium-Zinc alloy coated steel are coated with a transparent layer that provides protection and a uniform substrate for further coatings. This transparent coating allows identification of the Aluminium-Zinc substrate to be made by distributors and customers.

### Textured surface

Stone chip granules are applied to provide an attractive textured finish which at the same time enhance resistance to UV radiation. Granules are ceramic coated with lightfast heat resistant pigments.



### Steel specification

The Decra Classic and Stratos L tiles are made of Aluminium-Zinc alloy coated steel. The grade of steel used is designed to allow forming without cracking or significant elastic recovery and at the same time to be rigid enough to tolerate reasonable loads without excessive deformation.

### Decra Classic & Stratos L

Zn

Zinc  
43.4 %

Al

Aluminium  
55 %

Silicon

Silicon  
1.6 %

### Decra Classic & Stratos L

Steel Thickness

0.43 mm

Steel Grade

G300 / S280GD

Aluminium-Zinc Coating Mass

150 g/m<sup>2</sup>

Coating Grade

AZ150



# Decra Classic

Overall Length*	Length of Cover*	Overall Width*	Width of Cover/ Batten space	Minimum pitch
1335 mm	1260 mm	415 mm	368 mm	12° (21 %)
Maximum pitch	Roof Cover*	Tiles per m <sup>2</sup>	Weight/panel	Weight/area
90°	0.463 m <sup>2</sup>	2.16	3.10 kg	6.70 kg/m <sup>2</sup>

\*The measurements and the weight may vary slightly by the finish that is added to the accessory.



## Decra Classic

The trend of today will become a thing of the past tomorrow. With this truth in mind we developed Decra Classic with an evergreen shape, which will never go out of fashion. Decra Classic offers you a durable quality and style for long decades to come.

Good design can stand the test of time. For Decra Classic a gorgeous stonecoating on a timeless rooftile shape is looking after the lasting attractive appearance. Unique, corrosion resistant Aluminium-Zinc alloy offers you strength and durability against rust while strong steel core combined with 8-point-fastening-system (for each tile!) provides protection against the extreme weather your home may be exposed to due to climate change.





### Decra Stratos L

Has rustic charm stolen your heart?

Hand-split wood shake roofs captivated generations of home owners for centuries.

Decra Stratos L was developed to offer you the best of both worlds: the charming style of a wooden roof and the state-of-the-art technology of a corrosion resistant, strong metal roof.

No need to worry about fire, hailstorms or high winds. Decra Stratos L promises you irresistible beauty with stone chip coating and unbeatable protection with unique 8-point-fastening-system (and that's for each tile!). Decra Stratos L, no, it is not just an emotional decision.

Decra  
Stratos L

Overall Length*	Length of Cover*	Overall Width*	Width of Cover/ Batten space	Minimum pitch
1340 mm	1262 mm	415 mm	369 mm	12° (21 %)
Maximum pitch	Roof Cover*	Tiles per m <sup>2</sup>	Weight/panel	Weight/area
90°	0.470 m <sup>2</sup>	2.15	3.10 kg	6.66 kg/m <sup>2</sup>

\*The measurements and the weight may vary slightly by the finish that is added to the accessory.



# Material structure

## Decra Elegance & Qube



Super durable powder coating

Polyurethane primer

Zinc-aluminium-magnesium alloy

Steel

Zinc-aluminium-magnesium alloy

Polyester backer coating



### Coating specification

**Polyester Powder Coating:** The finish coating is an extremely durable High Gloss Polyester Powder Coating that is applied post pressing. This coating has proven durability retaining its high gloss finish for many years in all environments.

**Polyurethane primer:** The primer is applied by a coil coating process, this coating provides increased corrosion protection and a surface for superior adhesion of the Powder Coating that is applied.

**Polyester Backer Coating:** This coating provides increased durability to the underside of the tiles.



### Steel specification

The Decra Elegance & Qube tiles are made from pre primed zinc-aluminium-magnesium coated steel that when combined with the extra durable powder coating finish provides optimal performance. The grade of steel used is designed to allow pressing without cracking while at the same time is ridged enough to tolerate reasonable loads.

Zn	Al	Mg
Zinc	Aluminium	Magnesium
93,5 %	3,5 %	3 %

### Decra Elegance

Steel Thickness	Steel Grade	Zinc-aluminium-magnesium Coating Mass	Coating Grade
0.43 mm	DX52D	250 g/m²	ZM250

### Decra Qube

Steel Thickness	Steel Grade	Zinc-aluminium-magnesium Coating Mass	Coating Grade
0.50 mm	DX53D	250 g/m²	ZM250

Decra  
Elegance

Overall Length*	Length of Cover*	Overall Width*	Width of Cover/ Batten space	Minimum pitch
1335 mm	1260 mm	415 mm	370 mm	12° (21 %)
Maximum pitch	Roof Cover*	Tiles per m <sup>2</sup>	Weight/panel	Weight/area
90°	0.465 m <sup>2</sup>	2.15	2.07 kg	4.45 kg/m <sup>2</sup>

\*The measurements and the weight may vary slightly by the finish that is added to the accessory.



Decra Elegance

Probably a painted roof tile has never looked so stylish. For people who are always bold to be themselves and never tried to blend in with the crowd. The sleek Satin or High-Gloss powder coated finish of Decra Elegance will make any home special.

There is more to Decra Elegance than a unique appearance. The strength of corrosion resistance metal and the stormproof 8-point-fastening technique make it a loyal defender of your house. No matter if powerful hail, high-wind or rainstorm is sweeping through your neighbourhood, Decra will take care of a safe place to retreat to. The Elegance profile is also available in a sound absorbing version with special acoustic composition to improve sound insulation.





Decra Qube

A simple roof is a beautiful roof. Contemporary design understands that. Powder coated Decra Qube in High-Gloss finish can be the right match for any modern building. Modern design is more than appearance.

Technology and safety should follow otherwise the beauty is hollow. Decra Qube is made of 100 % recyclable, corrosion resistant, light metal.

Reliability is guaranteed through our cutting-edge installation system, which securely fastens in a unique horizontal way each Decra Qube tile on 8 different points. Decra Qube, modern inside and outside.

Decra  
Qube

Overall Length*	Length of Cover*	Overall Width*	Width of Cover/ Batten space	Minimum pitch
1305 mm	1260 mm	350 mm	321 mm	15° (27%)
Maximum pitch	Roof Cover*	Tiles per m²	Weight/panel	Weight/area
90°	0.405 m²	2.47	2.10 kg	5.19 kg/m²

\*The measurements and the weight may vary slightly by the finish that is added to the accessory.

# Your choice of colour

Decra Classic  
Decra Stratos L



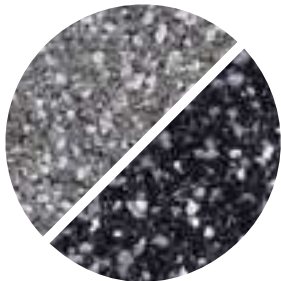
COAL BLACK

Decra Classic



RED

Decra Classic



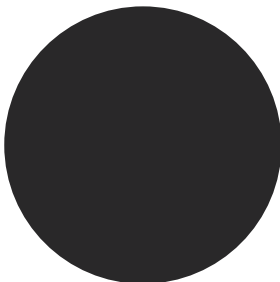
ANTIQUE GREY

Decra Classic



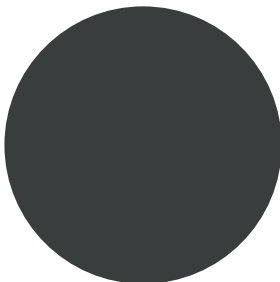
ANTIQUE RED

Decra Elegance  
Decra Qube



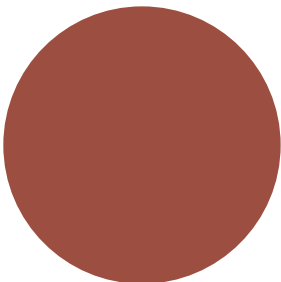
BLACK

Decra Elegance  
Decra Qube



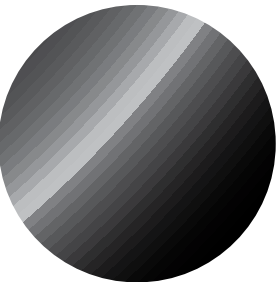
ANTHRACITE

Decra Elegance  
Decra Qube



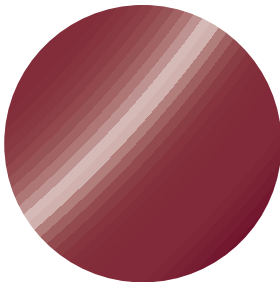
TERRACOTTA

Decra Elegance



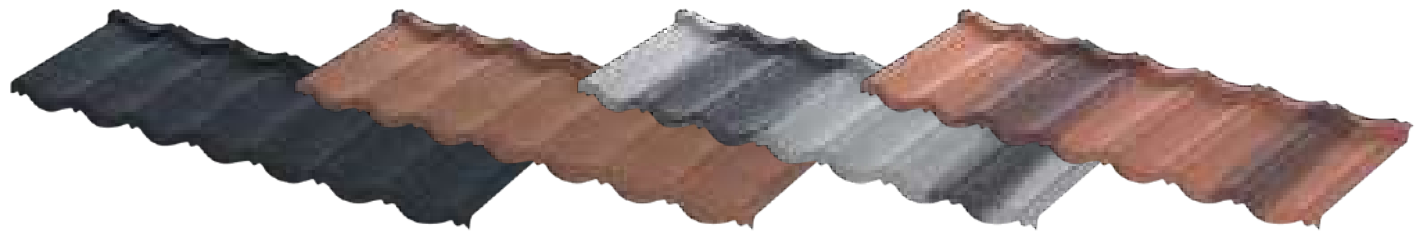
BLACK BRILLANCE

Decra Elegance



BORDEAUX BRILLANCE

## Decra Classic



## Decra Stratos L



## Decra Elegance

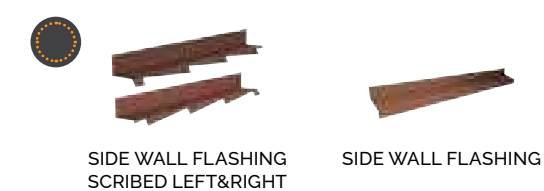
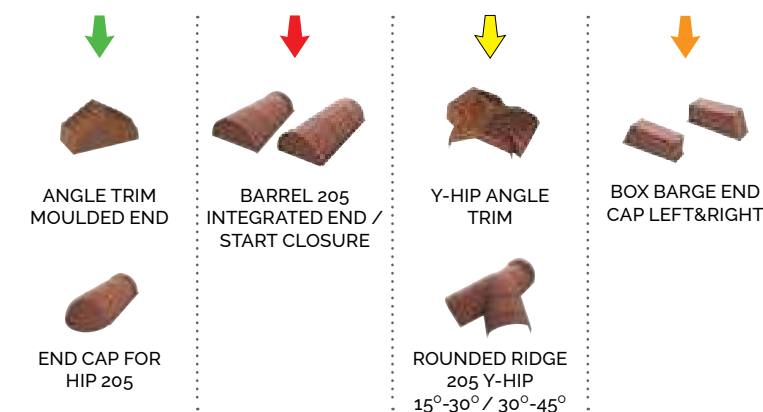
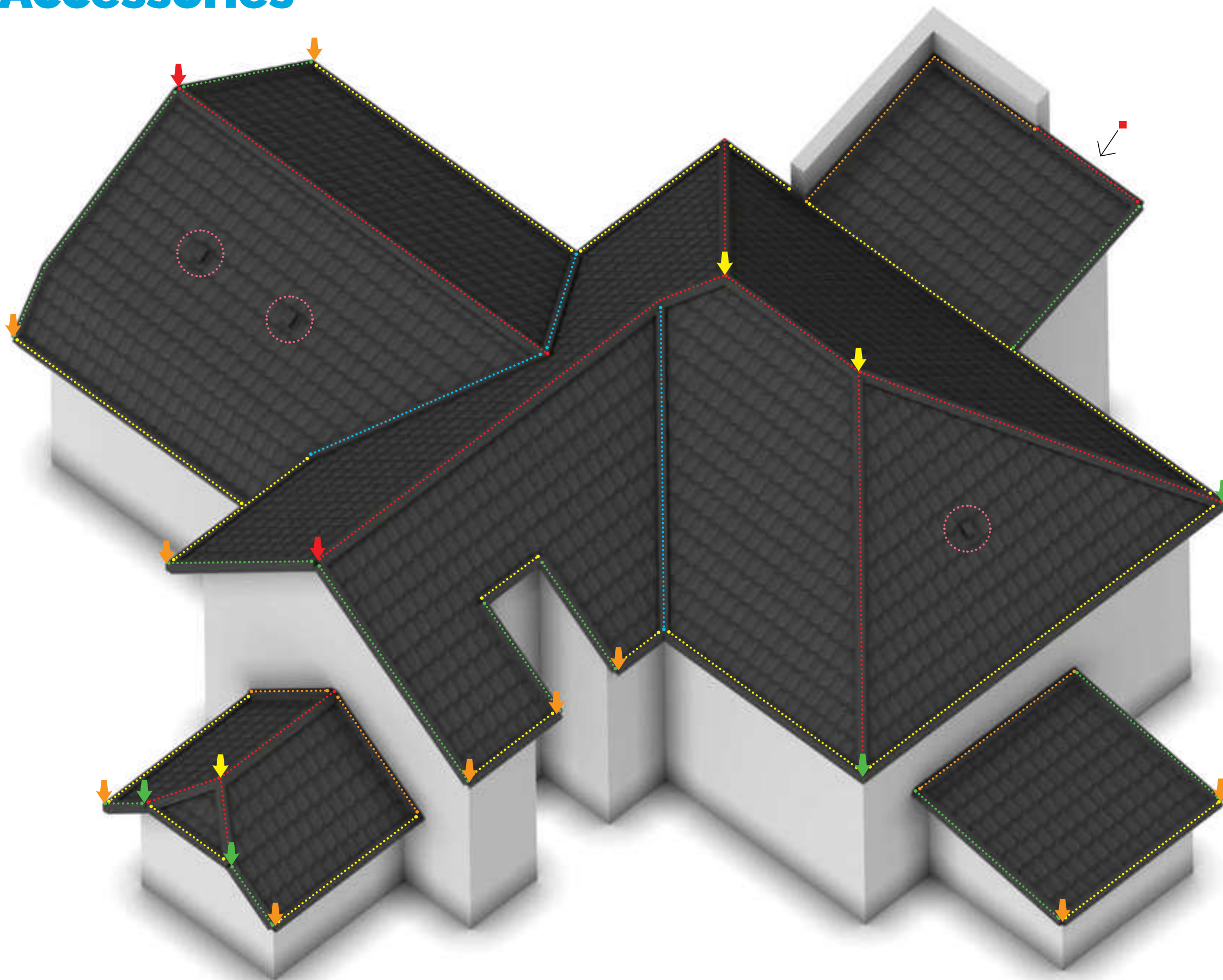


## Decra Qube





# Accessories





# Technology behind Decra

Decra's 65+ years' experience makes it the leading manufacturer of stonechip and powder coated steel roofing. State-of-the-art technology meets contemporary design producing the most gorgeous roofing profiles and their accessories. Supplemented with original Decra accessories we offer you one of the most reliable, complete roofing solution. Our technology is backed up by stringent external testing and a robust research and development programme. An essential feature of our technology is protection.

Protection from extreme weather such as high wind, hail or heavy rain has always been a key component of our roofing heritage. Strong steel core of our roof tiles and Decra's unique horizontal 8-point fastening technique looks after your safety when your home is exposed to the forces of nature.

Furthermore, we pride ourselves in the technology that defends Decra steel roofs from rust. We were lucky enough to find a great testing ground since many Decra roofs are located on coastal houses, which are exposed to corrosive salt water. Decra utilizes two types of steel substrates for added protection. For powder-coated products, zinc-magnesium steel is used, while for stone-chip coated products, an aluminum-zinc substrate is employed. Each substrate works in harmony with specific coatings tailored to each product type, ensuring exceptional durability, corrosion resistance, and strength.

Decra is committed to providing the most technologically advanced steel tiles designed to protect your home for decades to come. Our warranty is a testament to the quality we deliver, and many of our roofs continue to perform well long after the warranty period.





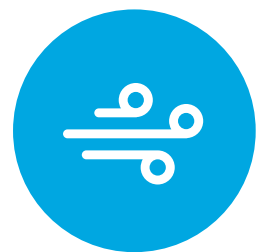
# Product benefits



## Lightweight & Strong

We continue to stress this fact because it's what makes Decra Roofs so flexible, adaptable and safe. Did you know that traditional roof tiles such as heavy clay and concrete tiles can be 7 times heavier than a Decra roof? Why is it good for you? It saves you money and time. Installation is faster thanks to the light and larger panels while remarkable costs can be saved with a lighter roof structure, which is sufficient for featherlight Decra.

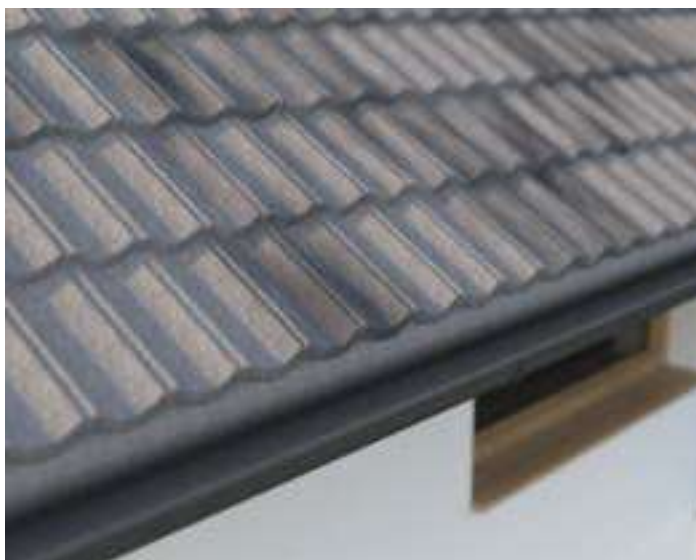
This exceptional advantage can make Decra a reroofing champion as well since it may even allow homeowners to install a new Decra roof straight onto their existing old roof structure. It is an interesting fact from the regions prone to earthquakes that in case of minor earthquakes, Decra can save homes. There are documented instances of other heavy-weightroofing products collapsing homes while Decra roofs in the same street remained intact and with minimal damage. Weakened walls can tolerate light weight roof and interlocking tiles result in strong roof. Don't take this advantage lightly, a light roof can take the (roofing) weights off your mind!



## Wind and storm resistance

Due to climate change we may encounter more extreme weather, even hurricanes, your home enjoys the best protection under a Decra roof. In our Hurricane test we unleashed a 160 km / h wind onto a Decra roof and it remained intact. We added plenty of water but it did not penetrate the roof and it was completely dry underneath. How is that even possible with a light roof?

Let us tell you the secret: our 8-point-fastening technique. Every single Decra metal roof tile is fastened to the roof battens on 8 (!) different places with strong nails. Because Decra



interlocking steel tiles are fixed horizontally, each with eight separate fasteners, wind shear is virtually eliminated. Most other traditional roofing products rely on vertical fixing methods that are prone to lifting in high winds. That is the reason that Decra roofs are more secure in high winds than vertically fixed – and not nailed – popular roofing alternatives like clay or concrete roof tiles. Safety first? Prepare your house for the worst! Let Decra roof be the bodyguard of your home defending it from the fiercest storms.



## Fire resistance

A strong roof is vital to maintain the structural integrity of a building especially in case of fire. Made of non-combustible materials Decra's non-corrosive metal roofs can offer you a lightweight fireproof home. Decra's 8-point-fastening technique, with every tile being securely fastened at eight points, and its complete watertight interlocking system take structural integrity to a new level. There is virtually no chance of the roof collapsing even in case of fire and it will not allow sparks to penetrate through into the house either. As a result, Decra roofs have passed stringent international fire tests and carry a "Class A" fire rating, making it one of the safest choices against fire hazards available today.



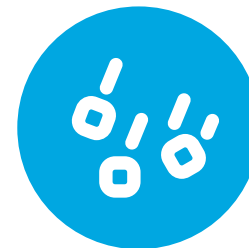
## Noise resistance

We often hear people say: we understand the beauty of stonechips, the strength of rustproof metal and the extraordinary protection of horizontal, 8-point-fastening but is a metal roof not noisy? We are aware of this concern and developed an efficient solution for it: the interlocking system and the rough stonecoating of our tiles proved to be the best noise protection amongst metal roofs.

Let a home owner speak for it:

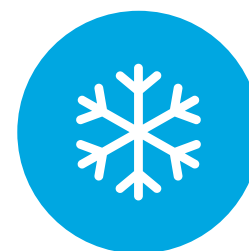
*"The benefit of stone coated metal roof compared to other lightweight roofs is that due to the stone-coating noise protection is much better and looks very attractive as well! Noise protection was vital for us since we live in the attic and did not want to suffer from a noisy roof."*

Mr. Zoltán Sebestyén, Érd, Hungary



## Hail protection

In Europe hailstorms can be one of the worst enemies of roofs. On 8<sup>th</sup> June 2018, a violent hailstorm with extremely huge hailstones 10 cm in diameter hit the South East region of Slovenia, Central Europe. Most devastated was Črnomelj municipality where the roofs of over 1700 private houses and non-residential buildings were destroyed. Only stone coated metal roofs proved to be hail resistant. In spite of the extreme size of hailstones, those roofs remained waterproof; the roof surface was slightly deformed, but not penetrated. This was not the case with other types of roofs, which suffered severe damage. Concrete or clay tiles can more easily break than strong metal roofs.



## Snow and ice protection

Decra knows no compromise when it comes to safety and beauty. The stone coating keeps the snow in its place till it melts and does not allow the snow to slide. With a Decra roof your home is safe in winter as well even without snow guards. By the way, have you noticed that those snow guards don't look good on roofs? With Decra you may even omit them and enjoy a beautiful roof without them.



# References around the world







Part of:



Michielenweg 3, 3700 Tongeren, Belgium

Tel. +32 (0) 12 39 88 01

E-mail: [info.europe@ikometals.com](mailto:info.europe@ikometals.com)

[www.decraroofs.eu](http://www.decraroofs.eu)

[www.ikometals.com](http://www.ikometals.com)



Decra Corporate Brochure - EN (09-2024)